

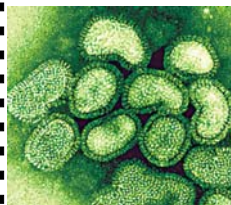
## This EpiCenter Edition Contains the First Influenza Report 2005-2006 Season & an Avian Influenza Update

### Epidemiology Staff

- **Alina M. Alonso, MD**  
 Assistant Director  
 Palm Beach County Health Department
- **Edwin Afamefuna, BS**  
 Senior Human Services Program Analyst
- **JoEllen Alvarez, RN, MPH**  
 Nursing Program Specialist/Coordinator
- **Ricardo R. Beato, MS**  
 Human Services Program Consultant and  
*EpiCenter* editor  
[Ricardo\\_Beato@doh.state.fl.us](mailto:Ricardo_Beato@doh.state.fl.us)
- **Judith M. Cobb, RN, MSPH**  
 Community Health Nursing Consultant
- **Andre Erich Correa, MD**  
 Senior Human Services Program Analyst
- **Antoinelle Hansley, RN, BS**  
 Senior Community Health Nurse
- **Vanessa P. Hightower**  
 Staff Assistant/Coordinator
- **Barbara F. Johnson, RN, BSN**  
 Senior Community Health Nursing Supervisor
- **Savita Kumar, MD, MSPH**  
 Medical Epidemiologist/Consultant
- **Cynthia Lewandowski, RN, BS**  
 Senior Community Health Nurse
- **Denise Pagán**  
 Human Services Program Consultant and  
*EpiCenter* editor  
[DeniseA\\_Pagan@doh.state.fl.us](mailto:DeniseA_Pagan@doh.state.fl.us)
- **Shamekia Powell**  
 Senior Clerk
- **Ginger A. Stanley, BHS**  
 Human Services Program Analyst

### INFLUENZA & INFLUENZA-LIKE ILLNESS REPORT

Division of Epidemiology and Disease Control  
 Week 48 (11/27/05)-Week 8 (02/26/06)



The Palm Beach County Health Department Division of Epidemiology and Disease Control (Epi) requests that hospitals, long term care facilities, and sentinel physicians throughout Palm Beach County report cases of influenza-like illness (ILI) on a weekly basis. Since influenza is not a reportable disease in Florida, the case reports are done on a voluntary basis. These reports assist us in understanding the status of influenza in Palm Beach County.

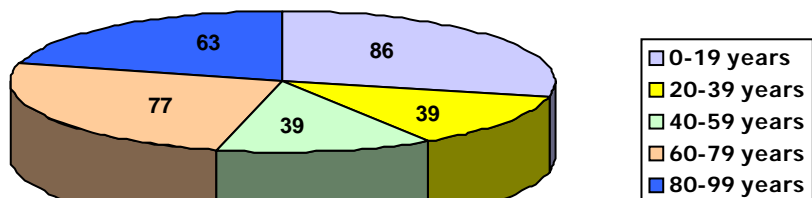
An ILI is defined as a fever  $\geq 100^{\circ}$  F and cough and/or sore throat. Hospitals report ILI cases confirmed by the influenza rapid test. Long term care facilities and sentinel physicians report ILI cases based on clinical symptoms. Long term care facilities report ILI cases among staff and residents, directly to Palm Beach County Health Department Epi, while sentinel physicians report to the Department of Health (DOH) in Tallahassee. Since each group reports ILI differently, this report will be divided into three separate sections outlining the ILI reports under each group. All the cases reported have been considered sporadic cases.

#### SECTION I: HOSPITALS

Total influenza type A confirmed cases reported by Hospitals in the area: **304**

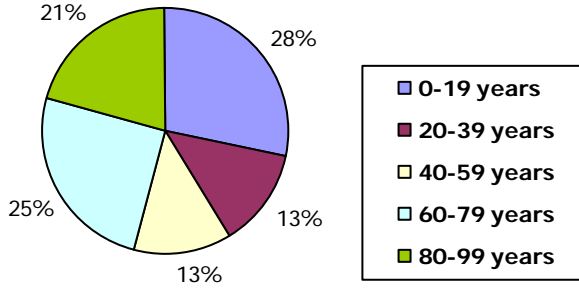
\*Note: There have been no reported influenza type B cases in Palm Beach County. Since long term care facilities only report number of ILIs, influenza cases confirmed at reporting hospitals may include long term care facilities' ILI cases.

Number of Confirmed Influenza Cases  
 by Age Group

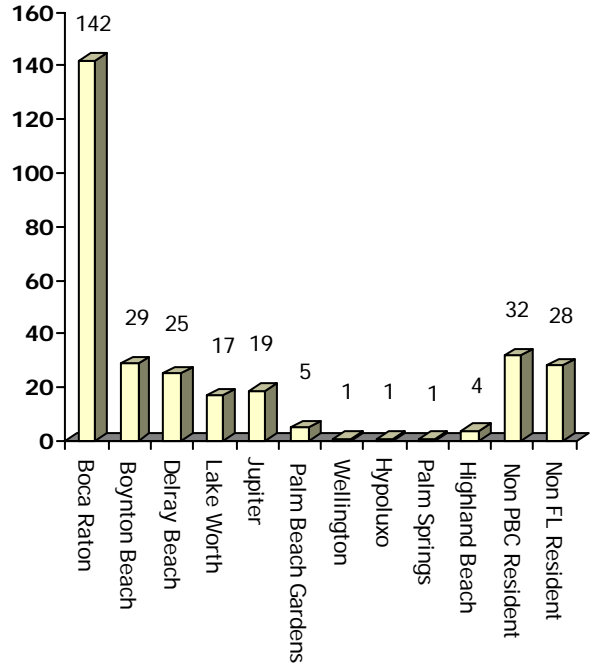


**SECTION I: HOSPITALS, cont.**

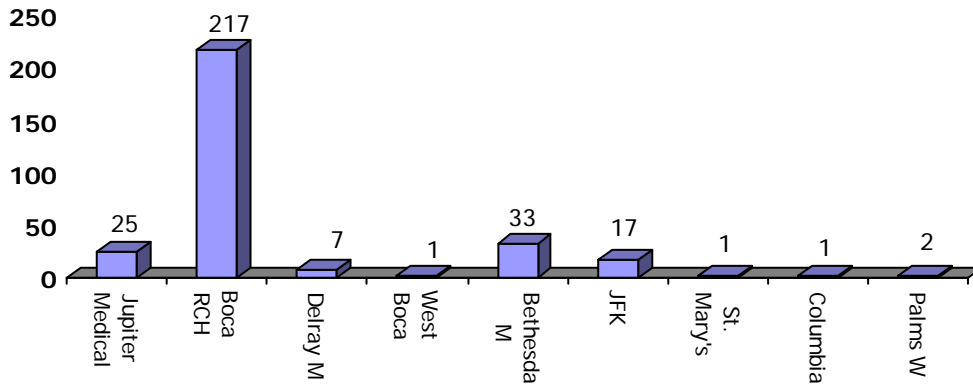
**Percentage of Confirmed Influenza Cases by Age Group**



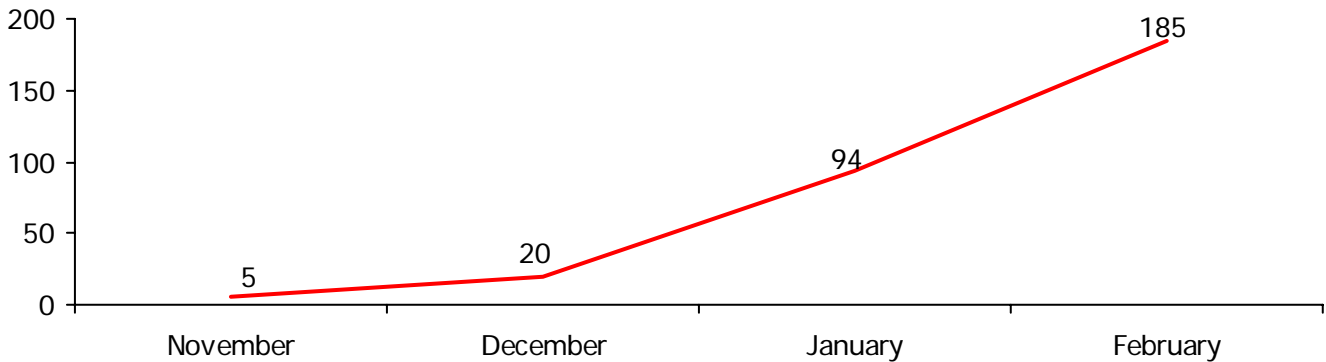
**Number of Confirmed Influenza Cases by City**



**Number of Confirmed Influenza Cases by Hospital**



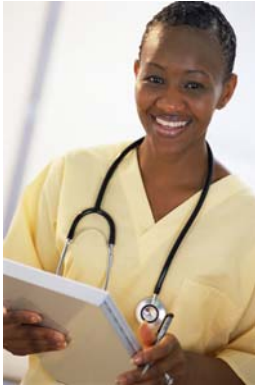
**Number of Confirmed Influenza Cases by Month**



**SECTION II: LONG TERM CARE FACILITIES**

The following section includes long term care facilities reporting ILI cases based on clinical symptoms, from week 49 (11/27/05) through week 8 (02/26/06).

\*Note: ILI cases in this section include cases among residents. This section includes long term care facilities that reported at least once, even if the number of ILI cases was zero. The total number of long term care facilities in our database is 56. 48 long term care facilities have reported at least once from week 49 through week 8. We would like to extend our appreciation to the long term care facilities that provided us the weekly ILI number of cases.



**Percentage of Long Term Care Facilities that Reported ILIs (at least once) from Week 49 Through Week 8**



**Number & Percentage of Total Residents & ILI Cases among Residents Reported from Week 49 Through Week 8**



**SECTION III: SENTINEL PHYSICIANS**

Sentinel physicians report on a weekly basis. The ratio of sentinel physicians is determined by the population of the county. A ratio of one sentinel physician per 250,000 residents is recommended. The 2000 census determined that Palm Beach County had a total year-round population of 1,154,464. Therefore four sentinel physicians are needed to fulfill the recommended ratio. Today there are four sentinel physicians in Palm Beach County. Of the four sentinel physicians in Palm Beach County, two are reporting on a weekly basis. More sentinel physicians are needed.



**If you or someone you know are interested in participating in the sentinel physicians program, please contact Ricardo R. Beato, M.S., 561-840-4566 or [Ricardo\\_Beato@doh.state.fl.us](mailto:Ricardo_Beato@doh.state.fl.us)**

The following is the last weekly report submitted by sentinel physicians in Palm Beach County.

County	Region	Week	Age 0-24	Age 25-64	Age 65>	Total Patients	Total ILIs	ILI %	Sentinel Reporting	Total Sentinels	Sentinels Reporting
Palm Beach	South-east	2/11/06	0	3	0	161	3	1.86 %	2	4	50%

## Avian Influenza Update

### Summary

Avian/Bird Flu (H5N1) is an influenza A virus subtype that occurs mainly in birds, is highly contagious among birds, and can be deadly to them. Outbreaks of H5N1 among poultry are ongoing in a number of countries. While H5N1 does not usually infect people, human cases of H5N1 infection associated with these outbreaks have been reported. Most of these cases have occurred from direct or close contact with infected poultry or contaminated surfaces. Nonetheless, because all influenza viruses have the ability to change, scientists are concerned that H5N1 virus one day could be able to infect humans and spread easily from one person to another. Because these viruses do not commonly infect humans, there is little or no immune protection against them in the human population and an influenza pandemic (worldwide outbreak of disease) could begin. Experts from around the world are watching the H5N1 situation in Asia and Europe very closely and are preparing for the possibility that the virus may begin to spread more easily from person to person.

### Confirmed Human Cases of Avian Influenza Reported by The World Health Organization (WHO) 2003 - March 10, 2006



Cambodia	China	Indonesia	Iraq	Thailand	Turkey	VietNam	
Cases	Cases	Cases	Cases	Cases	Cases	Cases	<b>Total Cases</b>
4	15	28	2	22	12	93	<b>176</b>
Deaths	Deaths	Deaths	Deaths	Deaths	Deaths	Deaths	<b>Total Deaths</b>
4	10	21	2	14	4	42	<b>97</b>

### Avian Influenza Lab Test

On February 3, 2006, the Food and Drug Administration (FDA) announced clearance of the **Influenza A/H5 (Asian Lineage) Virus Real-Time Reverse Transcription--Polymerase Chain Reaction (RT-PCR) Primer and Probe Set** for the in vitro qualitative detection of highly pathogenic influenza A/H5 virus (Asian lineage). The test provides preliminary results on suspected H5 influenza samples within four hours once a sample arrives at the lab and testing begins. Since February 2004, CDC has recommended enhanced surveillance in the United States for possible cases of human infection with avian influenza A (H5N1) virus. Consistent with these interim recommendations, testing for this virus is indicated when a patient has symptoms of severe respiratory illness and a risk for exposure (e.g., direct contact with ill, dead, or infected poultry in a country with outbreaks of influenza H5N1 among poultry). **Testing for influenza A/H5 (Asian lineage) should be considered on a case-by-case basis in consultation with local or state health departments.**

### Travel

At the present time the World Health Organization (WHO) is not recommending restrictions on travel to areas affected by H5N1 avian influenza, but is suggesting that travelers to these areas avoid contact with live animal markets and poultry farms, and any free-ranging or caged poultry.

**For up-to-date Avian Influenza information, please visit:**

[www.pandemicflu.gov](http://www.pandemicflu.gov)

[www.cdc.gov/flu/avian](http://www.cdc.gov/flu/avian)

[www.who.int/csr/disease/avian\\_influenza/en/](http://www.who.int/csr/disease/avian_influenza/en/)

### References:

Centers for Disease Control and Prevention. Avian Influenza: Current Situation.  
<http://www.cdc.gov/flu/avian/outbreaks/current.htm> (Accessed March 9, 2006).

MMWR. New Laboratory Assay for Diagnostic Testing of Avian Influenza A/H5 (Asian Lineage)  
<http://www.cdc.gov/mmwr/preview/mmwrhtml/mm5505a3.htm> (Accessed March 9, 2006).

World Health Organization. Cumulative Number of Confirmed Human Cases.  
[http://www.who.int/csr/disease/avian\\_influenza/country/cases\\_table\\_2006\\_03\\_08/en/index.html](http://www.who.int/csr/disease/avian_influenza/country/cases_table_2006_03_08/en/index.html)  
(Accessed March 10, 2006).

